

What is CDS?

*CDS is a lifeline for families.
CDS is a resource for the community.
CDS is a place to get help.*

While CDS's many individual programs serve a wide variety of community needs, they all fall under the umbrella of our mission statement:

Strengthening Communities by Building Strong Families.

Be it troubled youth, adults struggling with substance abuse or children at high risk for dangerous behaviors, CDS has programs that can help.



CDS has been serving the communities of North Central Florida for more than 40 years. Its services now cover an eleven-county area:

Alachua Dixie Lafayette Suwannee
Bradford Gilchrist Levy Union
Columbia Hamilton Putnam

CDS Family & Behavioral Health Services, Inc. is a private 501(c)(3) non-profit social services agency. At CDS, we constantly monitor our programs and results in order to better serve participants. We welcome your feedback!

www.cdsfl.org

Support Our Work!

CDS needs your help in order to continue providing valuable services to the community. Contributions are tax deductible and vital to our ongoing success. Both monetary and in-kind donations are very much appreciated! We also need volunteers to keep our many programs operating. For more information, please visit CDS's website or contact the Resource Development Coordinator at: (352) 244-0628x 3865, or giving@cdsfl.org.

Contact Information

CDS Administration

Gainesville (352) 244-0628

Youth Shelters

24 Hour, Toll Free (800) 854-5377
Interface Central, Gainesville (352) 244-0618
Interface East, Palatka (386) 385-0405
Interface Northwest, Lake City (386) 487-0190



Safe Place (352) 244-0618

Counseling Offices

Gainesville (352) 244-0628 x 3813
Palatka (386) 385-0405
Lake City (386) 487-0190

Prevention (352) 244-0628



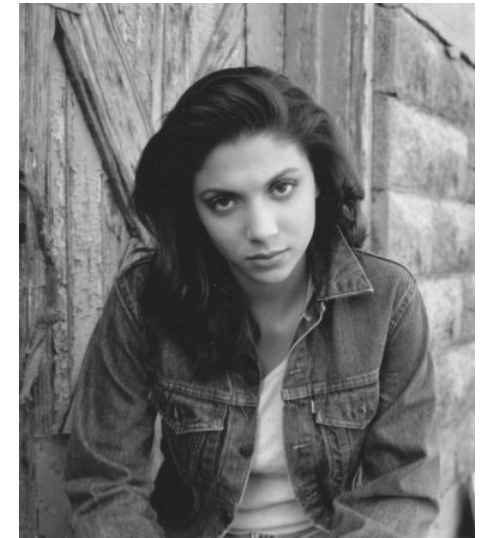
Youth Talk (352) 244-0666

“ A COPY OF THE OFFICIAL REGISTRATION AND FINANCIAL INFORMATION MAY BE OBTAINED FROM THE DIVISION OF CONSUMER SERVICES BY CALLING TOLL-FREE (800-435-7352) WITHIN THE STATE. REGISTRATION DOES NOT IMPLY ENDORSEMENT, APPROVAL, OR RECOMMENDATION BY THE STATE.”



Major support from: Florida Department of Juvenile Justice; Florida Network of Youth & Family Services; Florida Department of Children & Families; Partnership for Strong Families; U.S. Department of Health & Human services; Florida Council on Compulsive Gambling; United Way of North Central Florida; United Way of Suwannee Valley; Individual Donations

CDS Family & Behavioral Health Services, Inc.



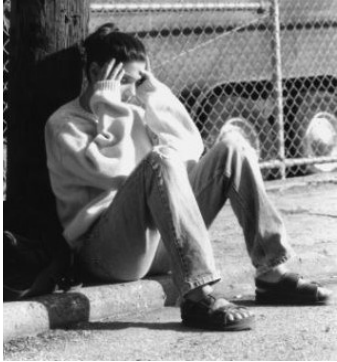
**Safe Place :
Where Kids Can Go
To Get Help Fast**

1400 NW 29th Road
Gainesville, FL 32605
(352) 244-0618
www.cdsfl.org

Our facilities are accessible to persons with disabilities.



What is Safe Place?



Project Safe Place is a community program that sets up public locations as a network of places where youth can get immediate help in times of crisis.

When should I go to a Safe Place?

- Are you afraid to go home?
- Have you run away from home?
- Are you being followed? Threatened?
- Have you been assaulted, raped, or abused?
- Have you been locked or kicked out?
- Are you lost? Scared? Need to talk?

Don't give up hope! No matter what the problem, there are people who understand and want to help you. If you are under 18 years of age in a crisis situation, go to the nearest Safe Place site.



How do I recognize a Safe Place?



Look for the bright yellow and black diamond-shaped signs or decals that identify Safe Place sites. Fire stations, YMCAs, Boys & Girls Clubs, libraries, schools, fast food restaurants, and other local businesses serve as Safe Place sites throughout the community. Many of the city buses display Safe Place signs in their windows and serve as mobile Safe Places. If you are unsure whether a business is a Safe Place, look for the Safe Place sign.

What if they're closed?

If you go to a Safe Place location and it is closed, you can call the 24-hour Youth Shelter number listed in this brochure. It doesn't matter what time or day it is, there are people available who can help you with your problems.

What can I expect when I go?



Tell the first available employee that you need Safe Place help. They will take you someplace safe in their building until transportation can be arranged to take you to

Interface, the local shelter for youth in crisis. At Interface, a counselor will talk with you and help you figure out what to do. Interface is a place where you can get meals, a bed to sleep in, a shower, and even clothing (if needed). The decision to go to the shelter is voluntary, and once you are there, no one will force you to stay. Interface staff are there to provide you with support, resources and assistance.

Will my parents (or guardians) be told where I am?

Yes. By law, your legal guardians must be notified to let them know you are safe. Remember that the counselors will be there to act as mediators if your parents/guardians come in. If you have made allegations of physical or sexual abuse, the Abuse Hotline will be contacted.



Where are Safe Places located?

Agency Bail Bonds
 Air-Way Cleaners
 Alachua County Department of Community Support Services
 Alachua County Fire Rescue stations
 Alachua County Libraries (all)
 Alachua County Public Schools (all)
 Arabesque Dancewear
 ARC of Alachua County
 Archer City Hall
 Archer Community Center
 Archer Fire Department
 Bagels Unlimited
 Boys & Girls Club of Alachua Co. (2700 NW 51st Street location)
 Child Advocacy Center
 City of Gainesville Recreation Centers (all)
 Fades & Fros
 Family Visitation Center
 Gainesville Community Ministries
 Gainesville Fire Department
 Gainesville Health and Fitness Centers
 Gainesville Job Corps
 Gainesville Police Department

GCM Thrift Shop
 Girls Place, Inc
 Highlands Presbyterian Church
 J. Wayne Reitz Union Game Room
 Junior League Thrift Shop
 Kiss 105
 McDonald's at Newberry Road
 McDonald's at University & 13th
 Meridian Behavioral Health Care
 Mother Earth Market
 North Central Florida YMCA
 RTS Bus System (all buses)
 Scotty's Heating and Air Conditioning
 Skate Station
 Studio Percussion
 T.B. McPherson Recreation Center
 Town Tire
 United Way of North Central Florida
 Winn Dixie (SW 16th Ave. and Main St.)
 Westside Recreation Center



Don't give up hope. Help is available.

- Youth Shelters (24 hrs) (800) 854-5377**
- Youth Talk (24 hrs)..... (352) 244-0666**
- Alachua County Crisis Center..... (352) 264-6789**
- National Runaway Switchboard ...(800) RUNAWAY**
- National Suicide Hotline (24 hrs)..... (800) 273-8255**