

What is CDS?

*CDS is a lifeline for families.
CDS is a resource for the community.
CDS is a place to get help.*

While CDS's many individual programs serve a wide variety of community needs, they all fall under the umbrella of our mission statement:

Strengthening Communities by Building Strong Families.

Be it troubled youth, adults struggling with substance abuse or children at high risk for dangerous behaviors, CDS has programs that can help.



CDS has been serving the communities of North Central Florida for more than 40 years. Its services now cover an eleven-county area:

Alachua	Dixie	Lafayette	Suwannee
Bradford	Gilchrist	Levy	Union
Columbia	Hamilton	Putnam	

CDS Family & Behavioral Health Services, Inc. is a private 501(c)(3) non-profit social services agency. At CDS, we constantly monitor our programs and results in order to better serve participants. We welcome your feedback!

www.cdsfl.org

Support Our Work!

CDS needs your help in order to continue providing valuable services to the community. Contributions are tax deductible and vital to our ongoing success. Both monetary and in-kind donations are very much appreciated! We also need volunteers to keep our many programs operating. For more information, please visit CDS's website or contact the Resource Development Coordinator at: (352) 244-0628 x 3865, or giving@cdsfl.org.

Contact Information

CDS Administration

Gainesville (352) 244-0628

Youth Shelters

24 Hour, Toll Free (800) 854-5377
Interface Central, Gainesville (352) 244-0618
Interface East, Palatka (386) 385-0405
Interface Northwest, Lake City (386) 487-0190



Safe Place (352) 244-0618

Counseling Offices

Gainesville(352) 244-0628 x 3813
Palatka (386) 385-0405
Lake City (386) 487-0190

Prevention (352) 244-0628



Youth Talk (352) 244-0666

“A COPY OF THE OFFICIAL REGISTRATION AND FINANCIAL INFORMATION MAY BE OBTAINED FROM THE DIVISION OF CONSUMER SERVICES BY CALLING TOLL-FREE (800-435-7352) WITHIN THE STATE. REGISTRATION DOES NOT IMPLY ENDORSEMENT, APPROVAL, OR RECOMMENDATION BY THE STATE.”



Major support from: Florida Department of Juvenile Justice; Florida Network of Youth & Family Services; Florida Department of Children & Families; Partnership for Strong Families; U.S. Department of Health & Human Services; United Way of North Central Florida; United Way of Suwannee Valley; Individual Donations

CDS Family & Behavioral Health Services, Inc.



Free Counseling & Support Services For TANF Participants

3615 SW 13th Street
Suite 4
Gainesville, FL 32608
(352) 244-0628 x3813
www.cdsfl.org

Our facilities are accessible to persons with disabilities.



Counseling & Support Services

Temporary Assistance for Needy Families (TANF)

CDS Family & Behavioral Health Services, Inc. provides free confidential substance abuse and mental health counseling, as well as case management services to those eligible for TANF (Temporary Aid to Needy Families) services. Eligibility is based on family income meeting 200% of the Federal Poverty Guidelines (see table) and one of the following criteria:



- ◆ Parents or relatives caring for one or more children under 19 years of age
- ◆ Pregnant
- ◆ Non-custodial parents of a child or children under 19 years of age

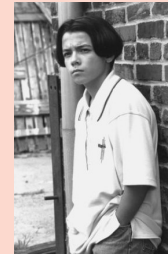


LET US HELP!



Our CDS counselors address a variety of issues including, but not limited to:

- ◆ Parenting Issues
- ◆ Stress Management
- ◆ Time Management
- ◆ Substance Abuse
- ◆ Domestic Violence
- ◆ Mental Health Counseling
- ◆ Employment Issues



CDS provides counseling and other services to families who are experiencing economic instability in part due to mental health or substance abuse problems.

Special attention is paid to adults and children who have additional risk factors that could contribute to current or future issues.



Services may be provided to families in the home, at school, a referral source location, provider location, or another appropriate location— whatever is most convenient for program participants.



Income Eligibility Table (2012)

Free counseling services are available to families with income at or below 200% of the Federal Poverty Level:

Family Size	Gross Annual Income	Gross Monthly Income
1	\$22,340	\$1,862
2	30,260	\$2,522
3	38,180	\$3,182
4	46,100	\$3,842
5	54,020	\$4,502
6	61,940	\$5,162
7	69,860	\$5,822
8	77,780	\$6,482

If family size is over 8, add \$7,920 per year or \$660 per month for each additional member.

For information about other services CDS offers, call (352) 244-0628, or visit www.cdsfl.org.